

FEATURES :

- 15 Watt Package
- 2:1Wide Input Voltage
- 100% Burned In
- High Efficiency to 87%
- Customized Solutions Available
- UL94V-0 Package Material
- Operating Temperature:-40°C to +85°C
- 3 Years Warranty

Specifications typical at TA=25°C, nominal input voltage and rated output current unless otherwise specified

Part Number	Input Voltage		Input Current (mA TYP)		Output Voltage	Output Current	Efficiency	Capacitor Load
	Vdc	No-Load	Full Load	Vdc	Full Load (mA)	%TYP	uF TYP	
67D-12S05RNL	9-18	30	1524	5	3000	82	2200	
67D-12S09RNL	9-18	30	1470	9	1666	85	1000	
67D-12S12RNL	9-18	30	1470	12	1250	85	1000	
67D-12S15RNL	9-18	30	1470	15	1000	85	680	
67D-12S18RNL	9-18	30	1470	18	833	85	470	
67D-12S24RNL	9-18	30	1453	24	625	86	470	
67D-12D05RNL	9-18	30	1524	±5	±1500	82	±1000	
67D-12D09RNL	9-18	30	1488	±9	±833	84	±470	
67D-12D12RNL	9-18	30	1488	±12	±625	84	±470	
67D-12D15RNL	9-18	30	1488	±15	±500	84	±330	
67D-12D18RNL	9-18	30	1470	±18	±416	85	±220	
67D-12D24RNL	9-18	30	1470	±24	±312	85	±220	
67D-24S05RNL	18-36	25	744	5	3000	84	3300	
67D-24S09RNL	18-36	25	735	9	1666	85	1000	
67D-24S12RNL	18-36	25	735	12	1250	85	1000	
67D-24S15RNL	18-36	25	726	15	1000	86	680	
67D-24S18RNL	18-36	25	726	18	833	86	470	
67D-24S24RNL	18-36	25	718	24	625	87	470	
67D-24D05RNL	18-36	25	753	±5	±1500	83	±1000	
67D-24D09RNL	18-36	25	735	±9	±833	85	±470	
67D-24D12RNL	18-36	25	735	±12	±625	85	±470	
67D-24D15RNL	18-36	25	735	±15	±500	85	±220	
67D-24D18RNL	18-36	25	718	±18	±416	87	±220	
67D-24D24RNL	18-36	25	718	±24	±312	87	±220	

YUAN DEAN SCIENTIFIC



DC-DC Converter

67D SERIES

15Watt 1.5KV Isolated

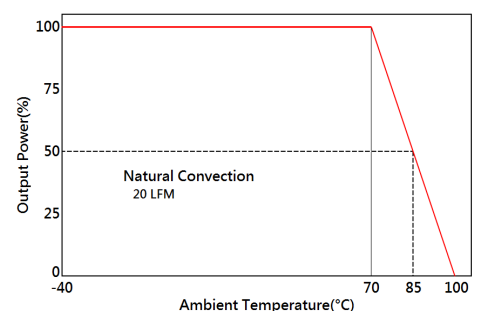
2 : 1 Input Voltage Range

Single & Dual Output

2" x 1"



Temperature Derating Graph



Specifications typical at TA=25°C, nominal input voltage and rated output current unless otherwise specified

Part Number	Input Voltage		Input Current (mA TYP)		Output Voltage		Output Current	Efficiency	Capacitor Load
	Vdc	No-Load	Full Load	Vdc	Full Load (mA)	%TYP	uF TYP		
67D-48S05RNL	36-72	20	372	5	3000	84	3300		
67D-48S09RNL	36-72	20	367	9	1666	85	1000		
67D-48S12RNL	36-72	20	363	12	1250	86	1000		
67D-48S15RNL	36-72	20	359	15	1000	87	680		
67D-48S18RNL	36-72	20	359	18	833	87	470		
67D-48S24RNL	36-72	20	359	24	625	87	470		
67D-48D05RNL	36-72	20	372	±5	±1500	84	±1000		
67D-48D09RNL	36-72	20	367	±9	±833	85	±470		
67D-48D12RNL	36-72	20	363	±12	±625	86	±470		
67D-48D15RNL	36-72	20	359	±15	±500	87	±330		
67D-48D18RNL	36-72	20	359	±18	±416	87	±220		
67D-48D24RNL	36-72	20	359	±24	±312	87	±220		

Input Specifications

Parameters	Conditions	Min	Typ	Max	Units
Voltage Types				2:1	
Filter	Pi TYPE				

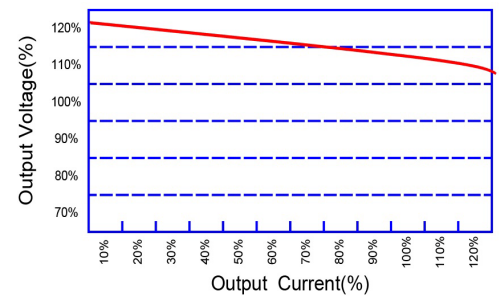
Output Specifications

Parameters	Conditions	Min	Typ	Max	Units
Voltage Tolerance	Full load @Vin(nom.)			±2	%
Short Circuit Protection	Hiccup, automatic recovery				
Line Regulation				±0.5	%
Load Regulation	Single (25% to 100%)			±1.0	%
Load Regulation	Dual (25% to 100%, Balance Load)			±2.0	%
Cross Regulation	DUAL (25% to 100%)			±5.0	%
Ripple & Noise	BW=DC To 20MHz			100	mVp-p
Transient response setting time	25% load step change		350		us

General Specifications

Parameters	Conditions	Min	Typ	Max	Units
Isolation Resistance	500Vdc	1000			MΩ
Switching Frequency			300		KHz
Operating Temperature	With derating	-40		85	°C
Humidity	Non Condensing			95	%
Cooling	Natural Convection (20LFM)				
Case material	Nickel Coated with Non-Conductive Base				
Weight			36.5		g
Dimensions			50.8x25.4x10.6		mm
Potting Material			Epoxy (UL94V-0 rated)		

Tolerance Envelope Graph

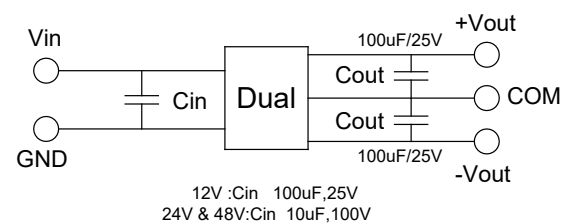
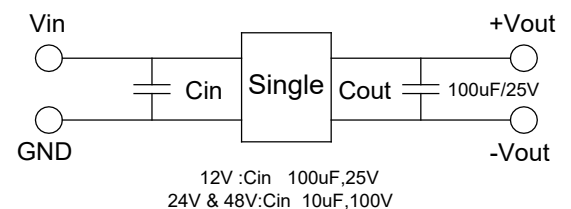


Part Number

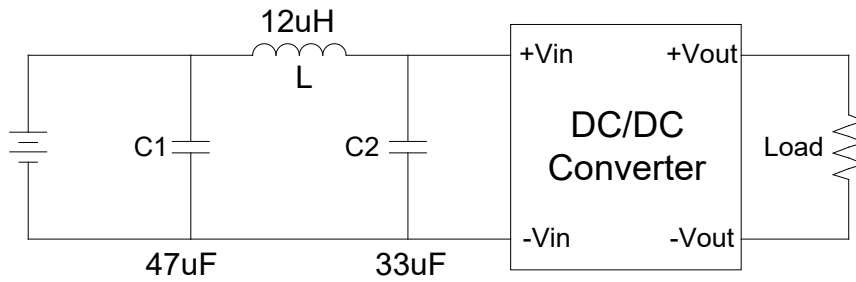
67D - 12 S 05 R NL
A B C D E F

- A:Series
- B:Input Voltage
- C:Single(S)Dual(D)
- D:Output Voltage
- E:Regulated(R)
- F:RoHS Version

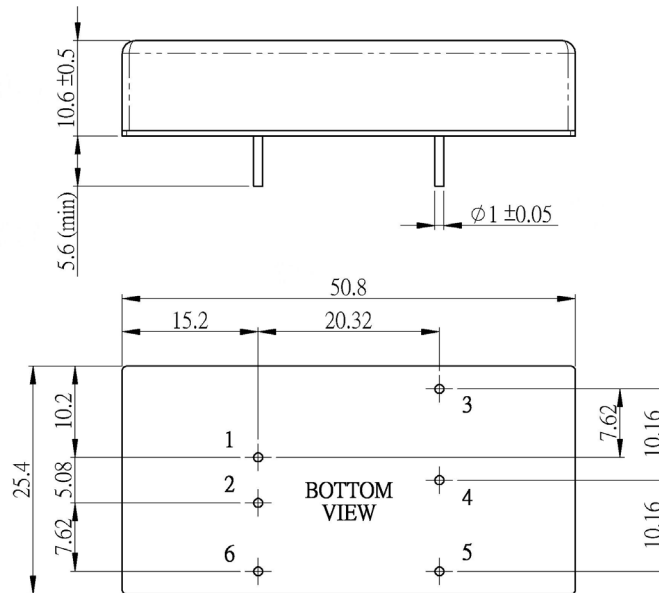
Recommended Test Circuit



Suggest adding input external filter(C1,C2,L)to meet conducted emissions(EN55022 class A)



Dimensions



Unit : mm
Tolerance : XX.X ± 0.5 , XX.XX ± 0.25

PIN Connection

Pin	1	2	3	4	5	6
Single	+Vin	-Vin	+Vout	NO PIN	-Vout	NO PIN
Dual	+Vin	-Vin	+Vout	COM	-Vout	NO PIN