

FEATURES :

- Universal Input 90~264VAC
- High Efficiency Up To 85%
- Protection: Short Circuit /Over load
- Fully Encapsulated Plastic Case
- 3 Years Warranty
- ROHS Compliant

Specifications typical at TA=25°C, nominal input voltage and rated output current unless otherwise specified

Part Number	Output Wattage	Output Voltage	Output Current	Ripple & Noise	Efficiency
	(W)	(VDC)	(mA)	(mV) max (Note)	(TYP %)
GA10D-S03	6.6	3.3	2000	150	72
GA10D-S05	10.0	5	2000	150	75
GA10D-S10	10.0	10	1000	150	80
GA10D-S12	12.0	12	1000	150	82
GA10D-S15	12.0	15	800	150	82
GA10D-S24	12.0	24	500	150	85
GA10D-S36	12.0	36	330	240	85
GA10D-S48	12.0	48	250	240	85

Note :

Ripple & noise is measured by using 20 MHz bandwidth, measured with a 47uf paralleled with a high-frequency 0.47uf capacitor across each output by full load.

Input Specifications

Parameters	Conditions	Min	Typ	Max	Units
Rated Input Voltage	Vo, Io nom		100~240		Vac
Voltage Range	Vo, Io nom	AC in	90	264	Vac
		DC in	120	370	Vdc
Line Frequency	Vi nom, Io nom	47	50/60	63	Hz
Inrush Current	Io nom	Vi:115VAC		10	A
		Vi:230VAC		20	A

YUAN DEAN SCIENTIFIC



AC-DC Converter

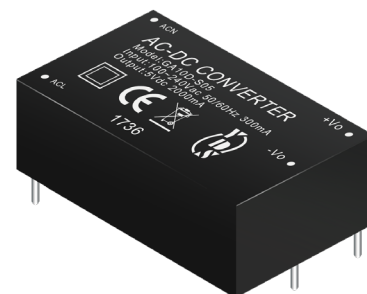
GA10D SERIES

10~12Watt

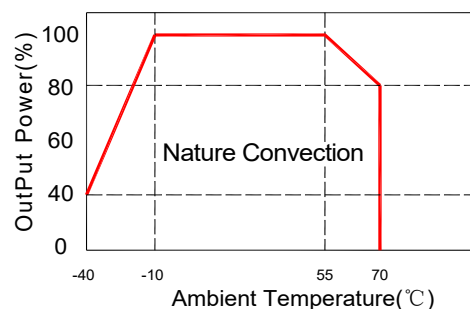
4KV Isolated

Single Output

Module



Temperature Derating Graph



Output Specifications

Parameters	Conditions		Min	Typ	Max	Units
Output Voltage Accuracy	Vi nom, Io nom	3.3...5V Models			±3	%
		10...48V Models			±2	%
Minimum Load	Vi nom		0			%
Line Regulation	Io nom, Vi min...Vi max			±0.2		%
Load Regulation	Vi nom, Io min...Io nom	3.3V Models		±1.0		%
		5...48V Models		±0.5		%
Transient Recovery time	Vi nom, Io nom= ↔0.5 Io nom			1000		us
Protection	Over load	Above 110% rated output power				
		Protection type: Recovers automatically after fault condition is removed				
	Short circuit	Recovers automatically after fault condition is removed				

General Specifications

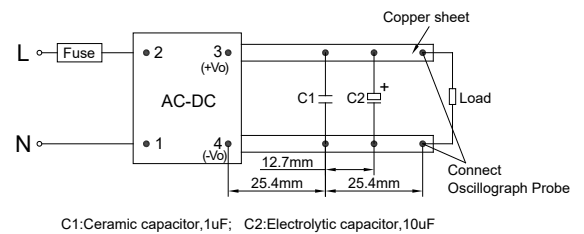
Parameters	Conditions	Min	Typ	Max	Units
Switching Frequency	Vi nom, Io nom		65		KHz
Isolation Voltage	Input / Output	4KVac/ 5mA/5Secs			
Isolation Resistance	Input / Output, @500 Vdc	100			MΩ
Operating Temperature	Refer to Temperature Derating Graph	-40		+70	°C
Storage Temperature	Non Operational	-40		+105	°C
Relative Humidity	Vi nom, Io nom			95	% RH
Safety Standards	Design refer to UL60950-1, IEC60950-1				
EMI Conduction & Radiation	EN55022, CLASS B (See Fig. 1 for recommended circuit)				
EMS Immunity	EN61000 (See Fig. 1 for recommended circuit)				
Dimension	L50.8 x W25.4 x H23.5 mm				
Cooling	Free air convection				

Part Number

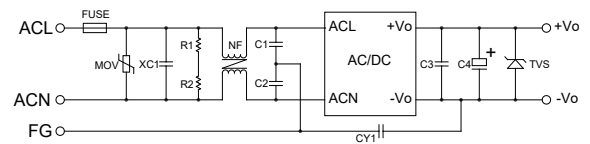
GA10D - S 03
A B C

A: Series
B: Single Output
C: Output Voltage

Parallel Lines Measure

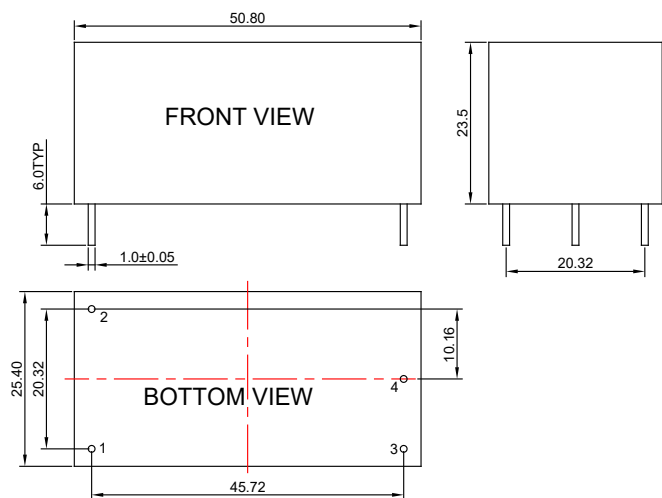


EMC Solution-recommended Circuit



NOTE:
MOV:14D-561K
XC1:0.47uF/275V,X2
R1\R2:750K,1206
NF:UU9.8,20mH
C1\C2:2200pF/250V,Y2

Markings and Dimensions



PIN	Model
	Single
1	ACN
2	ACL
3	+Vo
4	-Vo

Unit : mm Unless otherwise specified, all tolerances are ±0.50